

# Electronic Alarm Fence

## Taut Wire Fence with Strain Gauge Sensors



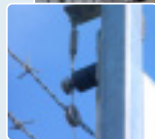
The Taut Wire Fence with strain gauge sensors, is a highly reliable perimeter detection system, deploying barbed wire strung between anchor posts and clamped to a highly sensitive strain sensor.

This provides a physical barrier that will set off an alarm in response to attempted intrusion by anyone who climbs, spreads, cuts, or otherwise tampers with the fence.

Utilizing the latest technology, including patented sensors and a powerful microprocessor, the Taut Wire system facilitates the ability to process and distinguish between different intrusive activities, thus setting a new standard for such systems.

### Features

- Highly sensitive with extremely low false alarm rate
- Zone length up to 100 meters
- Integrated detection and hindering barrier
- Tamper protected
- Patented electronic strain gauge sensor
- Adjustable sensitivity level for each individual wire
- Individual wire sensor indication
- Enables self-diagnostics of all hardware
- Immune to EMI / RFI
- Specific alarm signal for different intrusive activities
- Automatic temperature compensation
- Indifferent to ground vibration
- Not affected by wind gusts and environmental conditions
- Easily integrated to Command and Control for remote controlled perimeter defense system
- Highly cost effective



For more information [click here](#)

Note: Parameters may be altered to comply with customer specifications. Elbit Security Systems Ltd. reserves the right to make such alterations in design, dimensions specifications and manufacture as are deemed necessary to ensure continued improvement.



# Electronic Alarm Fence

## Intrusion Detection Utilizing Microphonic Sensor Cable & Taut Wire Fence with Strain Gauge Sensors



- Elbit security systems specializes in supplying, installing and integrating intrusion detection systems utilizing electronic alarm fences. The systems detect any attempt by hostile intruders to cut, climb, destroy, distort or tamper with the fence, while rejecting signals generated by small animals and by environmental stimuli.
- The electronic alarm fences are based on two independent highly reliable technologies - the microphonic sensor cable and the strain gauge sensors. Microphonic cable can be installed effectively on any type of fence including chain, welded and others. Strain gauge sensors are used on taut wires fences. Both can be installed on buildings and walls. The microphonic sensor cable is installed along the fence and the strain gauge sensors are attached to fence poles.
- Each technology can be installed independently or both combined, according to customer's fence configuration. Both technologies result in a high probability of detection and low nuisance and false alarm rate.
- The protected site perimeter is divided into a number of independent zones according to customer's requirement. The sensitivity of each zone,

as well as other parameters, can be locally or remotely adjusted. The electronic alarm fence also protects all types of gates, wickets and culverts.

- The system operates in all weather conditions, it is reliable, is immune to lightning and to EMI/RFI and is easy to maintain. Sensitivity is not degraded in wind speeds of up to 70 km/hr.
- The fence sensors are connected to the computerized control center via a processing unit. All the information from the field is displayed on a site map enabling full control of the system by the operator. The electronic alarm fence can be integrated with any other systems attached to the computerized control center. The center combines alarm signals from several remote sites. Alarms are analyzed and displayed on the operator's screen and may be transferred to cellular telephones of operators and controllers.
- Both technologies of the electronic alarm fence were approved by the Israeli Defense Forces and are deployed in large number of sites world wide.



### Microphonic Cable

The Microphonic Cable is an optimal intruder deterrence and delay measure. It utilizes the latest manufacturing technology, patented magnetic construction and sensor cable design techniques to set new standards in perimeter security.

Frequency response produced by the cable eliminates the need for complex electronic processing or signal amplification-eliminating one of the major causes of

false alarms with old generation sensor cables, With no blind spots and detection ranges of 1.2 meters on either side of the cable, the robust construction and modular design of the cable make it the sensor choice for every application.

### Features

- Latest generation microphonic sensor cable-optimized for perimeter security
- Broad protection against intrusive activity for fence and building applications
- Highly flexible - can follow almost any contour or terrain
- Simple installation
- Highly cost-effective
- Command and Control compatible
- High sensitivity detection
- Specific alarm signal for different intrusive activities
- Suitable for rigid and semi-rigid metal fences
- Weather resistant and robust construction
- Zone length up to 300 meters
- Tamper protected
- Immune to EMI / RFI and indifferent to ground vibration
- Dual channel signal processing

